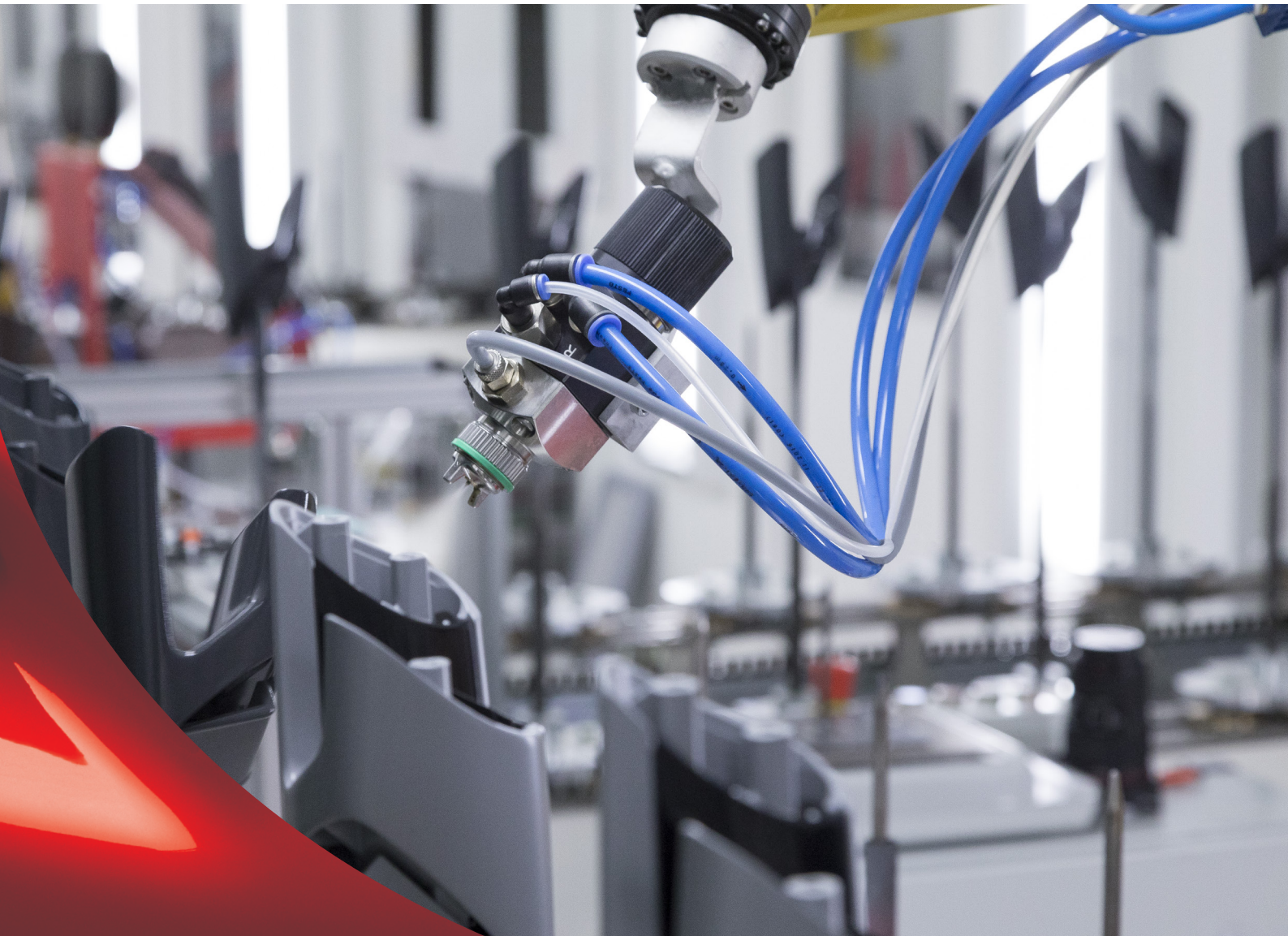


The complete product range for
industrial coating applications



German Engineering

Spray Guns | Cup Systems | Breathing Protection | Air Filtration | Accessories



Successful serial production

Secure application processes for perfect finishes

Industrial coatings have to fulfill various functions and to meet many quite different quality expectations, depending on the field of application. Consequently, a wide array of different industrial coating media are available on the market. SATA offer suitable solutions, whether it be manual spray guns or **automatic as well as robotic spray guns**. With SATA application technology, high process security and reproducibility will be ensured.

High quality, state-of-the-art spray guns are of vital importance for a secure work process. At the same time, it also must be ensured that **technically clean compressed air** is available to achieve the expected high-quality finishes. Effective **health protection** to preserve the well being of the staff on the shop floor is another important element.

For all of these areas, SATA offer product solutions designed to meet the daily requirements in a bodyshop.

This brochure gives you an overview on the large SATA product programme.



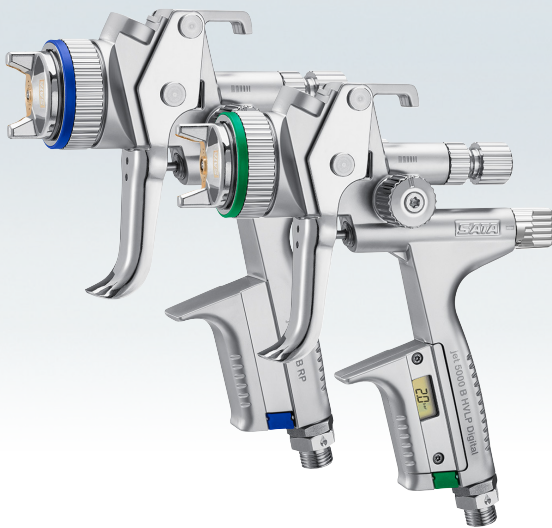


FOR MORE INFORMATION:

- Topcoat spray guns (pages 4 – 7)
- Allround spray guns (page 8)
- Compact spray guns (page 9)
- Special solutions (pages 10– 11)
- Breathing protection and air filtration (pages 12 – 17)
- Material supply systems (pages 18 – 19)
- Cleaning systems (pages 20 – 21)
- Bodysshop equipment
- Accessories (pages 22 – 23)

Top coat spray guns for perfect finishes

SATA high performance spray guns are employed to achieve perfect finishes in industrial coating processes, whether it be hand-held gravity cup spray guns, material fed spray guns or automatic spray guns. **Their nozzle sets are perfectly adapted to the modern base and top coats of all leading paint manufacturers** and are "fine-tuned" in the SATA final control. This ensures finishes which meet highest demands in regard to **brilliance, effects, material distribution, gloss level and colour match.**



SATAjet® 5000 B

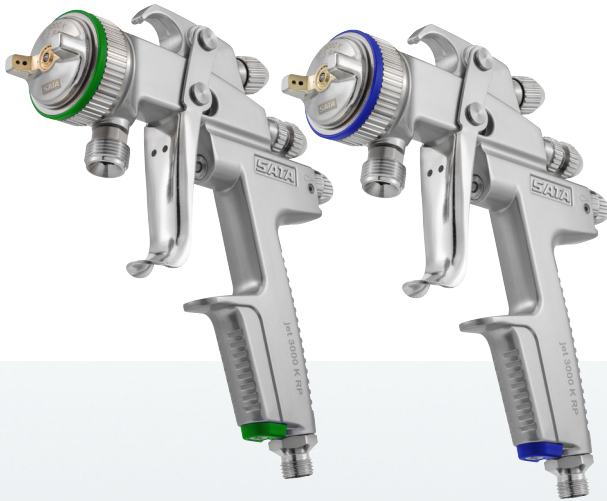


- Optimised nozzle concept for highest possible versatility
- Ergonomically formed gun handle
- Pearlodised™ surface is a technical enhancement of the pearlchrome™ surface to improve corrosion resistance as well as ease of cleaning and maintenance
- Easy to operate control elements
- Safely positioned trigger sleeve – for easy, safe and quick insertion of the paint needle
- Swivel joint with new high performance seal
- Identical, compact gun handle shape for both Non-Digital and Digital models
- Optimised round / flat fan control with half a turn only



To choose the correct nozzle size, please contact your local SATA dealer or pay us a visit on our website www.sata.com

SATAjet® 3000 K



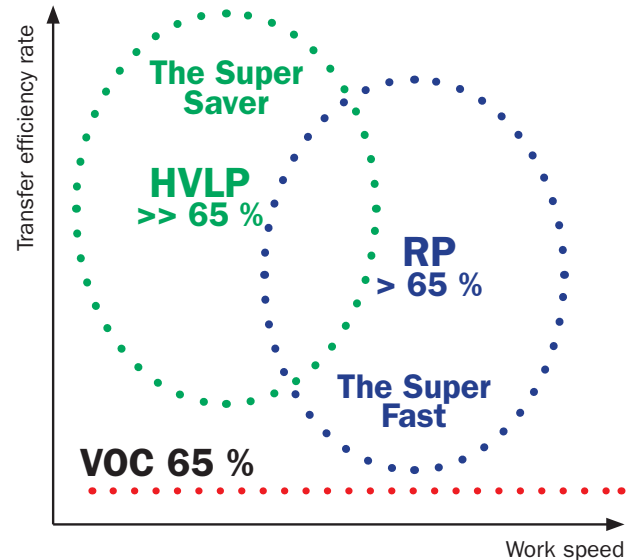
The pressure-fed gun for large surface applications

Painting entire utility vehicles requires pressure fed spray guns

- High surface efficiency due to material supply from pressure tanks or via double diaphragm pumps
- Wide, smooth and homogeneous spray fan for perfect finishes at high application speed
- Extremely robust gun model with axial round/flat spray control
- **Optional:** For permanent use or abrasive materials: fluid tip and paint needle with lifetime prolonging surface



HVLP and RP



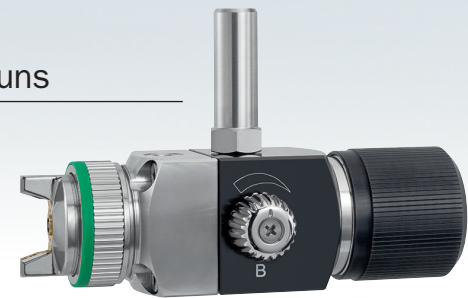
HVLV: Due to their low pressure technology, these SATA spray guns achieve extremely high transfer rates.

RP: The optimised high pressure technology allows maximum application speed.

SATAjet® 3000 A™ + SATAjet® 3000 ROB™ – automatic spray guns

Pressure-fed spray guns for the use on painting and robotic machines.

- Nozzle technology of the SATAjet 3000 K – provides perfect finishes automatically
- Stainless steel and material recirculation versions as well as quick change adapters available
- Various possibilities to allow the exact adjustment to the material and your individual painting process
- Adjustment to common systems engineering of leading manufacturers
- Low-wear, safe results and easy to maintain
- Manual adjustment of round and flat fan as well as material flow with A version, external fan adjustment with ROB version



SATAjet 3000 A



SATAjet 3000 ROB



SATAjet 1000 – The Allround Spray Gun

The SATAjet 1000 B is the multi application choice amongst gravity flow cup spray guns for craft and industry. **Due to the wide range of nozzle sizes and accessories available, various materials can be perfectly applied:** low-viscosity stains, clear coats, texture finishes and glazes as well as spray-on glues and other thixotropic products. Even areas of difficult access can be easily coated.



HVLP 30%
RP

adam 2
compatible

RPS
suited
0.3-0.6-0.9

CCC
Quick
Cup Connector

Quick
1 min air cap
change

CCS
easy identification
ColorCodeSystem

1 + 2 = 3
years
Premium Warranty

SATAjet® 1000 B



Universal spray gun with gravity flow cup

- Universally adjustable spray pattern with fine atomisation for a high work speed
- Special air passages on the air cap horns prevent material accumulations caused by overspray
- Wide and smooth material passages improve the material flow – reduces cleaning time and ensures perfect paint jobs
- Comfortable, ergonomically well balanced control elements, such as material flow control, the thumb adjustable round/flat spray control and integrated air micrometer
- Sturdy, easy clean surface



HVLP 30%
RP

adam 2
compatible

Quick
1 min air cap
change

CCS
easy identification
ColorCodeSystem

1 + 2 = 3
years
Premium Warranty

SATAjet® 1000 K



- High surface efficiency due to material supply from pressure tanks, via double diaphragm pumps or colour change systems, such as e.g. pig trap stations
- Smooth and homogeneous spray fan for perfect finishes
- Optional: fluid tip and paint needle with lifetime prolonging surface

SATAjet® 1000 H RP

Spray guns with 1.0 l suction cup
High work speed and surface efficiency due to optimised high pressure technology.

adam 2 compatible

Quick 1 min air cap change

CCS easy identification ColorCodeSystem

1 + 2 = 3 years Premium Warranty





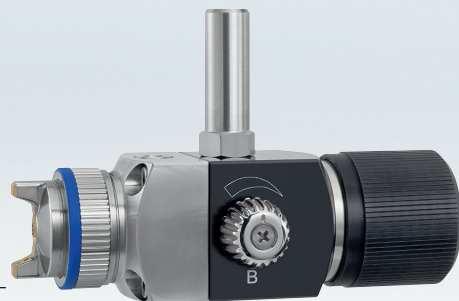
SATAjet® 1800 M™



- VOC-compliant, proven atomization technology – optionally available as HVLP low pressure technology or as RP with optimized high pressure technology, special nozzles for functional coatings and adhesives
- Versions for external spray fan control via the painting unit or external control via integrated round/flat spray control
- Versions with or without material circulation
- Nozzles optionally available with lifetime prolonging surface
- Material passages made of anodised aluminium or stainless steel
- Connections for compressed air supply and material supply on the rear side (rear-connection) or on the bottom side (bottom side connection), depending on the installation position
- Quick change adapter to exchange the spraying module



SATAjet® 1000 A™ RP®



Pressure fed spray guns for the use on painting robots

- Nozzle technology of SATAjet 1000 K
- Lifetime prolonging surface treatment of material passages for abrasive materials available
- Stainless steel and material recirculation versions as well as quick change adapters available
- Various possibilities to allow the exact adjustment to your individual painting process
- Adjustment to common systems engineering of leading manufacturers

- Low-wear, safe results and easy to maintain
- Manual adjustment of round and flat fan as well as material quantity



SATaminijet® 4400 / 1000

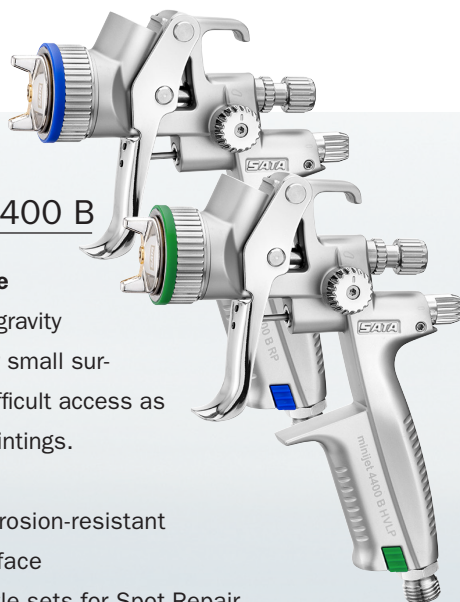
small size – big performance

SATaminijet® 4400 B

Brilliance in Miniature

Compact, lightweight gravity flow cup spray gun for small surfaces and areas of difficult access as well as for custom paintings.

- Easy to clean, corrosion-resistant pearlodised™ surface
- Special "SR" nozzle sets for Spot Repair
- Large QCC cup connection for all cup sizes
- Air consumption: RP: 200 NI/min at 2.5 bar; HVLP: 120 NI/min at 2 bar

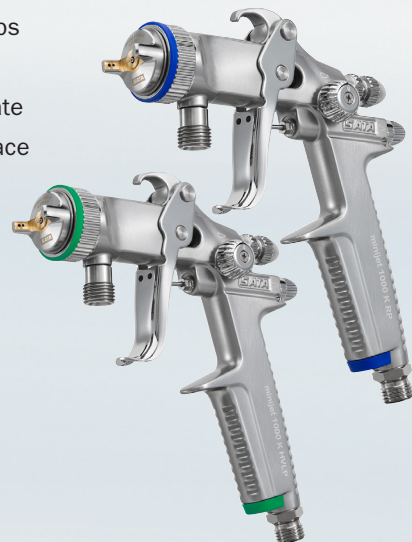
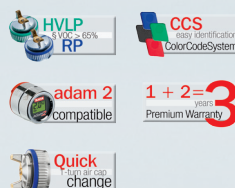


SATaminijet® 1000 K



The SATaminijet 1000 K series has been especially developed for the industrial coating of small to medium sized lots of small parts under series conditions.

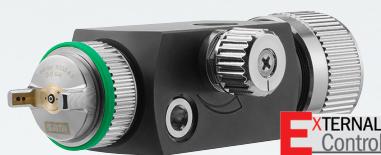
- Compact and lightweight industrial gun for special industrial/wood paint jobs
- Low air consumption
- High material transfer rate
- Sturdy, easy clean surface



SATaminijet 1000 ROB

SATaminijet 1000 A S

SATaminijet 1000 A



SATaminijet® 1000 A + ROB, A S HVLP

Pressure-fed spray guns for the use on painting and robotic machines.

- Nozzle technology of the SATaminijet 1000 series
- Finest atomisation on small surfaces and with coatings of complex component parts
- Nozzle sizes as of 0.3
- Various possibilities to allow the exact adjustment to your individual painting process

- Adjustment to common systems engineering of leading manufacturers
- Low-wear, safe results and easy to maintain
- Manual adjustment of round and flat fan as well as material flow with A version, external fan adjustment with ROB version
- Version A S for high frequencies of markings

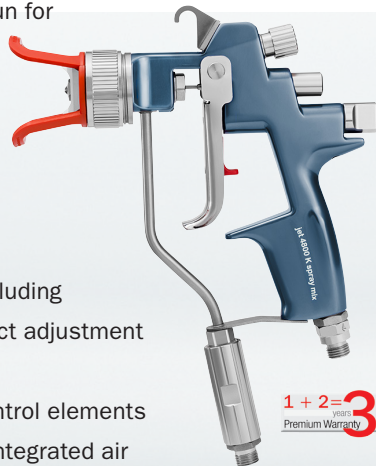


Special solutions

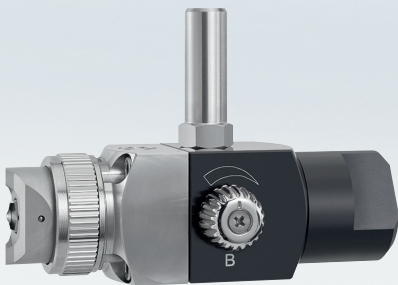
SATAjet® 4800 K spray mix™



- High application efficiency at high finish quality and low overspray, environmentally friendly application
- Sturdy hand-held spray gun for air-assisted airless application for highest requirements and long lifetimes
- Perfectly suitable for waterborne paints
- Wide range of nozzles including inverse nozzle for a perfect adjustment to material and object
- Ergonomically shaped control elements such as fan control and integrated air micrometer
- Air and material swivel joints (with ball bearing) for optimum operation



1 + 2 = 3
years
Premium Warranty



INTERNAL Control
1 + 2 = 3
years
Premium Warranty

SATAjet® 3000 A spray mix™

Air-assisted airless spray gun for the use on painting machines

- Nozzle technology of the SATAjet 4800 K spray mix
- Wide range of nozzles
- Adjustment to common systems engineering of leading manufacturers
- Low-wear, safe results and easy to maintain
- Manual adjustment of round and flat fan

SATA® spray master RP®

- Combines trendsetting, low overspray high pressure technology with the advantageous features of a pressure-assisted spray gun
- Allows the application of almost all paint systems with various viscosities up to thick-film glaze – with perfect finish results.
- Little masking efforts and low air consumption



SATA® BVD™

- 0.7 l QCC pressurised cup to retrofit your spray guns
- For the application of high viscosity materials
- Max. material pressure: 1.7 bar

SATA® agitator cup (RWB)

- Pneumatically operated, adjustable mixing of materials that tend to settle, such as emulsions or paints / colours with metallic or mineral components.
- Suitable for all SATA spray guns with QCC cup connection
- Size: 0.7 l



SATAjet® 20 B design set

Airbrush gun with round fan nozzle with extraordinary gun shape: ergonomically balanced for fatigue-free work, sturdy and low maintenance.

The SATA design set contains the SATA 20 B 0.5 gun as well as all necessary accessories.

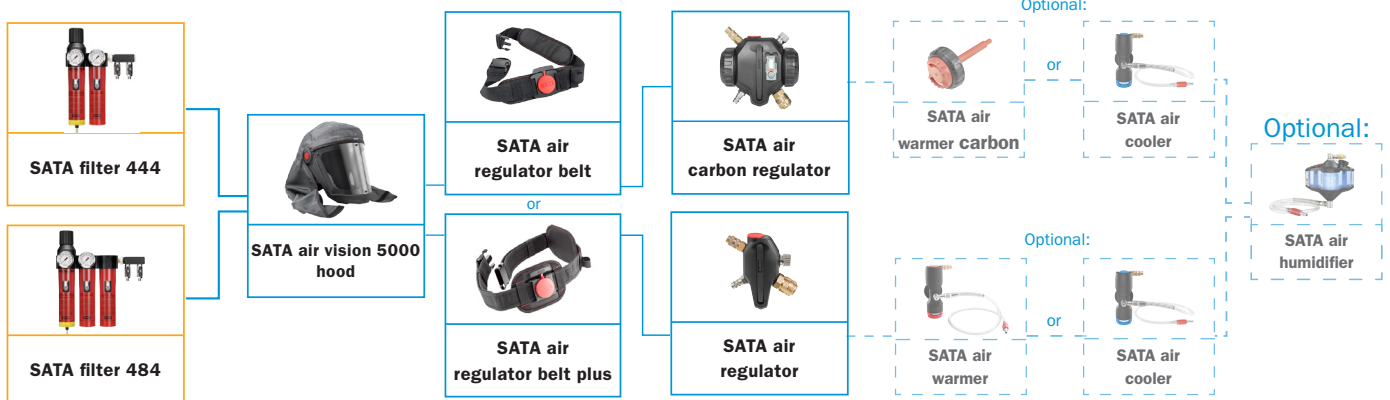
SATA® air vision 5000

PRODUCT BENEFITS

- High breathing air quality: The air supply independent of the ambient air eliminates all potential risks for the painter by contaminated spray booth air possibly arising from saturated filter cartridges
- No inhalation resistance, very comfortable breathing
- High protection level, suitable for long application intervals
- Protects up to 100 times the TRK-value*
- Visor allows one-hand operation
- Non-reflecting view due to solvent-resistant special foil
- Little operating costs, quick pay-off of purchase costs
- Ergonomic design with a host of options for individual adaptations
- Soft-stream flow-optimised air distribution in the hood
- Large field of vision: approx. 297 cm² at a maximum possible angle of 220°
- Reduced sound level: 64 dB (like a conversation in 1m distance)
- Rigid skull cover for safer work conditions
- Replaceable visor foils allow unchanging clear view onto the workplace
- To be used in conjunction with a filter unit, preferably SATA filter 484; air supply to be effected via special compressed air hose



SATA air vision 5000 system design with SATA filtering systems



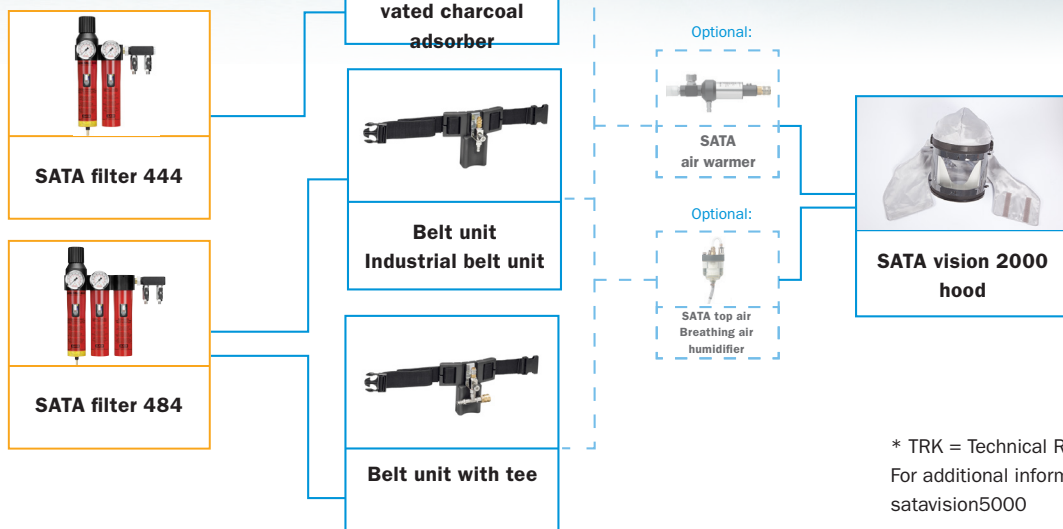
SATA® vision™ 2000

PRODUCT BENEFITS

- High breathing air quality due to air supply independent of the ambient air, no inhalation resistance, high breathing comfort
- High protection level, suitable for long application intervals
- Protects up to 100 times the TRK-value*
- Visor allows one-hand operation
- Non-reflecting view due to solvent-resistant special foil
- Little operating costs, quick pay-off of purchase costs
- To be used in conjunction with a filter unit, preferably SATA filter 484; air supply to be effected via special compressed air hose



SATA vision 2000 system design with SATA filtering systems



* TRK = Technical Reference Concentration (TRC)
For additional information, visit: www.sata.com/satavision5000

Filter regulators and breathing protection – for perfect finishes and perfect health

Every bodyshop requires compressed air for many different applications, such as sanding, cleaning, painting and drying. According to the field of application, there are different requirements concerning air purification: In any case, SATA offer the appropriate filter solution.

SATA filter 400 series



The filter series for the spray booth

For the application of solvent-based paint material, a SATA filter 444 can be applied. For highest possible safety with the use of respirators and the application of waterborne paint material, we categorically recommend the SATA filter 484 as the activated charcoal filtering stage of this filter also eliminates hazardous oil vapours.

- Maximum protection for the painter
- Prevents expensive coating flaws reliably
- User-friendly and easy to maintain
- Quick and easy installation
- Economical and efficient
- Extremely high air flow (approx. 3,600 NI/min at 6 bar)
- Robust, durable filter canisters
- Includes SATA filter timers to monitor the filter cartridge exchange intervals
- Suitability of the triple-stage filter (SATA filter 484) for applying waterborne paints and for breathing air
- Indicator – especially high contaminant contents in the compressed air may require shorter exchange intervals as indicated



SATA® AB1



- Breathing air humidifier and warmer for continuous use for the supply of up to five painters.
- Humidification of the breathing air to approx. 22 –25 % relative air humidity
- Warming of the breathing air (when heating is switched on) to approx. 20 – 25° C
- Allows the supply of up to five respirator hoods at the same time
- Increased user acceptance of breathing protection, significantly improved health protection



SATA half masks convince by a **high protection level, long lifetime and comfortable wearing features** – to be for sure on the safe side.

SATA air star C™



- Supply of clean breathing air independent from the ambient air outside the spray booth
- Free vision (protective goggles required)
- High breathing air quality due to air supply independent of the ambient air, no inhalation resistance, no accumulation of heat and humidity inside the mask
- Protects up to 100 times the TRK-value*
- Excellent fit for any type of facial contours
- Very light and comfortable
- 4 pointed straps for easy handling and safe seat
- To be used in conjunction with a filter unit, preferably SATA filter 484 – air supply to be effected via special compressed air hose



SATA air star F™



- Breathing protection mask depending on the ambient air, with replaceable filter cartridges
- Unrestricted mobility
- Small investment
- High wearer comfort, free vision (goggles required)
- Easy handling and safe seat
- Pre-filters to extend the lifetime
- Relatively low inhalation resistance
- Four-pointed straps for easy handling and safe seat



Material Supply Systems for an Optimised Painting Process

For the application of larger amounts of paint, the SATA material supply systems in combination with pressure fed SATA spray guns are the perfect solution. The universally applicable systems feature easy handling, sturdy construction, long lifetime and little maintenance.

SATAjet® 4800 K spray mix®, SATA® modulus™ *

SATAjet 4800 K spray mix – for efficient application with low overspray

- Perfectly suitable for waterborne and solvent-based paints and coating materials
- Air and material swivel joints (with ball bearing) for optimum operation
- Material supply can be quickly exchanged due to component assembly

SATA modulus piston pump system – As individual as its tasks

- Modular piston pump system – consisting of the following individual modules: pump, air, material, filter, carrier and extension
- Adapts easily to changing tasks

* Until further notice: Distribution exclusively in Germany and Austria



SATA® vario top spray™

The double diaphragm pump

- High performance diaphragm pump technology with enhanced pump capacity for high speed application
- Robust, wear resistant and low-maintenance double diaphragm technology
- Large variety of pumps for liquid transportation, material delivery and paint applications
- High profitability and fast return on investment, due to continuous material delivery and high transfer efficiency










- Ultra-fine atomisation of primer materials and topcoats in conjunction with the reliable, top quality SATA spray guns (e.g. SATAjet 3000 K and 1000 K)
- Two different versions are available: Standard version in aluminium for the application of solvent-based materials, and stainless steel version for the application of both solvent-based and waterborne materials.



SATA® paint pressure tanks



- Time saving due to continuous working without interruptions
- Pulsation free, even material supply
- Also suitable for high viscosity, paste-like or thixotropic materials
- Various equipment and special versions
- Enhanced working opportunities due to large range of accessories
- Available with a volume of 10, 24 or 48 litres

		Features pot and lid made of stainless steel						
								
		Single pressure reducer	Double pressure reducer	Pot insert	Pneumatic agitator without gear	Pneumatic agitator with gear	Electric Motor driven agitator	Manual agitator
SATA paint set 10 with ... 	X							
	X			X				X
			X					
SATAjet 3000 K RP, 1.1, material supply tube, material filter 60 msh, hose pair 9x9 mm, 6m length			X	X				X
SATA FDG 24N* with ... 	X							
	X							X
	X				X			
	X					X		
	X						X	
			X					
			X					X
			X		X			
			X			X		
		X				X		
SATA FDG 24U* with ... (Material outlet on the bottom of the tank)		X						
			X					
SATA FDG 48N* with ... 	X							
	X							X
	X				X			
	X					X		
	X						X	
			X					
			X					X
			X		X			
			X			X		
		X				X		

* Special versions with material outlet on the bottom of the tank as well as pressure plate are available upon request.

SATA® mini set™ 2

For mobile use

- Pressure pot with a volume of 2 litres
- Handy, can be used anywhere
- Closed system

- Easy to clean
- Also available as complete spray unit in combination with a SATAjet 3000 K spray gun



SATA® RPS® – The Original.

The safe, refillable cup system for professionals: easy, perfect and without compromise

SATA RPS (Rapid Preparation System) is the ideal cup system for shops focusing on perfect finishes and high profitability. It makes a painter's life much easier, considerably increases productivity and drastically reduces the consumption of cleaning solutions and solvents.



CHARACTERISTICS

- Easy to use – only 3 parts
- Constant material flow – helps the painter to achieve perfect coating results just like child's play
- Allows very quick colour changes – cleaning becomes a secondary issue
- The special lid shape ensures complete consumption of the paint contained in the cup
- Large number of mixing ratios (up to 100 variations)
- Fits directly on all SATA spray guns
- Stable cup ensures safe storage of leftover material
- Reduces cleaning effort and solvent consumption
- Available in the 3 cup sizes 0.3 l, 0.6 l and 0.9 l
- Different strainer types available

For selecting the correct sieve fineness, please ask your paint manufacturer.

Cleaning systems for spray guns

Spray gun cleaning is an important but understandably less popular task amongst painters. SATA cleaning devices reliably help achieve proper spray gun cleaning, thus relieving the painter. **They not only maintain proper function of the spray gun, but also increase the process security in the bodyshops.**



SATA® clean RCS® micro

The compact version is also available as space-saving option with a one-chamber-system.

- To connect large cleaning agent containers
- Recommended for assembly in the mixing area
- Space-saving one-chamber system

SATA® clean RCS® compact

- To connect large cleaning agent containers
- Recommended for assembly in the mixing area

SATA® clean RCS®

The turbo cleaner

- For bodyshops with high output and many colour changes.
- Rapid and safe colour change when using disposable cups, such as SATA RPS
- Thorough cleaning of the material passages
- Eliminates the need for trips in and out of the booth, as it can be mounted inside the spray booth
- Increases bodyshop productivity

SATA® multi clean™ 2

Cleaning device with built-in exhaust unit

- Thorough and gentle cleaning of spray gun, cup and lid
- Low cleaning fluid consumption
- Closed, environmentally friendly system
- Brush soaked in cleaning agent for manual cleaning



Everything for the Modern Bodyshop and Workshop

Every bodyshop should be equipped with robust grit blasting guns, spray guns for underbody protection and cavity preservation materials as well as complementing innovative accessories to improve daily work processes.



SATA® UBE™

Efficient suction cup gun to apply underbody and stoneguard underbody compound out of disposable cans.
Art. No. 12740



SATA® HRS™

Pressurised cup spray gun for cavity preservation with three quick change wands for various fields of application.
Art. No. 9795



SATA® Multitool

The SATA Multitool comprises of 13 different implements designed to aid the maintenance of all SATA spray guns.
Art. No. 228999



SATA blow gun

Blow gun with multi nozzle for high efficiency at little air consumption.
Art. No. 15214



SATA® dry jet 2™

Special blow gun to reduce drying time of waterborne paints.
Art. No. 217489
Two blow guns mounted on a stand via quick couplings.
Art. No. 223008



SATA grit blasting gun

Quick and easy removal of small corrosion spots.
Art. No. 17335



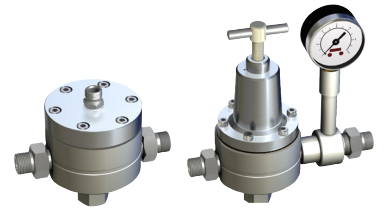
SATA® clean®

Wet holding tray for up to three spray guns. Prevents drying out of the nozzle.
Art. No. 60095



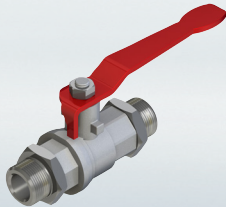
High quality air and material hose

To connect spray guns and material fed systems. Antistatic, conductive, free of substances causing coating flaws, 20 bar pressure-resistant, high breaking safety. Available on rolls, cut into lengths and/or mounted as hose pairs.



SATA® material fine pressure regulator

for the pulsation absorption of paint supply via pump systems. Continuous material output depending on the operation of the pump. Pressure between 0 and 6 bar.



SATA® Ball Valves

Various ball valves for compressed air and material supply.



SATA® material coupling with plug-in nipple G 3/8

For quick spray gun connection and disconnection
Art. No. 91140
Art. No. 91157 (with 60 msh sieve)



SATA® PHR

Hand agitator for stirring paints and other sprayable media.
Art. No. 16477



SATA dock

with G 1/8" male thread to retrofit analogue pressure gauges, e.g. in pneumatically operated systems
Art. No. 195925



Spray gun holder

For wall or table mounting. Useful tool for refilling SATA RPS disposable cups.
Art. No. 40188

SATA® adam® 2



SATA® adam® 2 U

Air micrometer G 1/4" female thread and 1/4" male thread with SATA adam 2 display for SATA dry jet and competitor spray guns
Art. No. 195214

SATA® adam® 2 / adam® 2 mini™

Turns a non-digital spray gun into a "DIGITAL" - for retro-fitting SATA spray guns without integrated digital pressure gauge. Ensures correct setting and display of the gun inlet pressure for highest colour match precision



SATA® adam® 2

For SATAjet spray guns except SATAjet 5000 B
Art. No. 160846



SATA® Universal spray gun and hose holder.

Art. No. 192195



Spray gun holder

For wall mounting.
Art. No. 9886



SATA® adam® 2 mini™

For SATAminijet®
4400 B/3000 B and 1000 H/K
Art. No. 160879



SATA® adam® 2 / SATA® adam® 2 black

Only for SATAjet 5000 B
Art. No. 211540
Art. No. 1031723 (black)

Spray guns

Characteristics – Meaning of symbols



VOC-compliant atomization technology – optionally available as HVL P low pressure or RP optimised high pressure technology



Optional: With built-in electronic inlet pressure measurement



Innovative and versatile digital retrofit air micrometer



Switching back and forth from round to flat spray fan with a quarter turn only



Perfectly suitable for the use of RPS disposable cups



Cup connection for quick and clean cup changes as well as easy cleaning



Quick air cap change with one turn only



For the convenient identification of your spray gun



Top quality is not enough – we guarantee it: for three years



Internal control means that the spray gun is equipped with an internal control for pre and post air activated by a pneumatic "On/Off" impulse.



External control means that all adjustment and control functions are operated via an external control in the control unit.

Extensions

Extensions for SATAjet 1000 B RP and K RP as well as for A RP are available allowing special applications, such as hollow body coatings, areas of difficult access or narrow or deep-seated areas:

- Diagonal spray nozzle set (30°, 40 or 20 cm



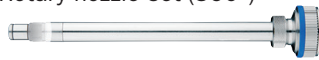
- Round/flat spray nozzle set



- Angular head and flat spray nozzle set



- Rotary nozzle set (360°)



Modular extensibility with various extensions also for SATA automatic spray guns



Adhesive application

- SATAjet 1000 B/K D RP 1.6 ("Spiral" round fan nozzle) for the application of adhesives
- SATAjet 1000 K RP 1.5 OS especially for dispersion adhesive



Spray guns for industrial coating applications

Further important factors for choosing the right spray gun are the work methods of the painter, the object to be painted, the paint system being used and the air volume provided by the compressor.

Type of material and application	SATAJet® 5000 B		SATAJet® 3000 K RP	SATAJet® 1000 B RP	SATAJet® 1000® K RP
	Nozzle size Atomization pressure				
	HVLP	RP*	RP*	RP*	RP*
Textured paints	1,9 1,5 - 2,0 bar	1,6 - 2,0 1,8 - 2,0 bar	1,3 - 1,5 1,5 - 2,5 bar	1,8 - 2,0 0,5 - 2,0 bar	1,3 - 1,5 1,5 - 2,5 bar
1K top coats	1,4 - 1,7 2,0 bar	1,4 - 1,6 1,8 - 2,0 bar	1,1 - 1,3 1,5 - 2,5 bar	1,3 - 1,6 1,5 - 2,0 bar	1,1 - 1,3 1,5 - 2,5 bar
2K top coats	1,4 - 1,7 2,0 bar	1,4 - 1,6 1,8 - 2,0 bar	1,1 - 1,3 1,5 - 2,5 bar	1,6 - 1,8 1,5 - 2,0 bar	1,1 - 1,3 1,5 - 2,5 bar
Base coats / single stage materials	1,3 - 1,4 2,0 bar	1,3 - 1,4 1,8 - 2,0 bar	0,8 - 1,1 2,0 - 2,5 bar	1,3 1,5 - 2,0 bar	0,8 - 1,1 2,0 - 2,5 bar
Clearcoats	1,3 - 1,4 2,0 bar	1,3 - 1,4 1,8 - 2,0 bar	0,8 - 1,3 2,0 - 2,5 bar	1,3 1,5 - 2,0 bar	0,8 - 1,3 2,0 - 2,5 bar
Primer materials	1,4 - 1,7 2,0 bar	1,3 - 1,4 1,8 - 2,0 bar	1,1 - 1,3 1,5 - 2,5 bar	1,3 - 1,6 1,5 - 2,0 bar	1,1 - 1,3 1,5 - 2,5 bar
Filler/primer materials	2,2 1,5 - 2,0 bar	2,0 1,5 - 2,0 bar	1,5 - 1,7 1,5 - 2,5 bar	2,0 2,5 - 3,5 bar	1,5 - 1,7 1,5 - 2,5 bar
Dispersion adhesives	-	-	-	D (1,6) OS (1,6) 1,5 - 2,5 bar	D (1,6) OS (1,6) 1,5 - 2,5 bar
Contact adhesives	-	-	-	D (1,6) OS (1,6) 1,5 - 2,5 bar	D (1,6) OS (1,6) 1,5 - 2,5 bar

Type of material and application	SATAmijet® 4400 B		SATAmijet® 1000 K	SATA® spray master RP	SATAJet 4800 K spray mix
	Nozzle size Atomization pressure				
	HVLP	RP*	RP*	RP*	RP*
Textured paints	-	1,6 1,0 - 2,5 bar	1,3 - 1,5 1,5 - 2,5 bar 0,8 - 1,2 bar	SM 1,5 - 3,0 bar 0,3 - 0,8 bar	-
1K top coats	0,8 - 1,1 1,5 - 2,0 bar	0,8 - 1,4 1,5 - 2,5 bar	1,1 - 1,3 1,5 - 2,5 bar 0,8 - 1,2 bar	-	2850 3350 2,0 bar 100 bar
2K top coats	-	-	1,1 - 1,3 1,5 - 2,5 bar 0,8 - 1,2 bar	-	2850 3350 2,0 bar 100 bar
Base coats / single stage materials	0,8 - 1,1 2,0 bar	0,8 - 1,4 2,0 - 2,5 bar	0,8 - 1,2 2,0 - 2,5 bar	-	-
Clearcoats	0,8 - 1,1 2,0 bar	1,0 - 1,4 2,0 - 2,5 bar	-	-	-
Primer materials	0,8 - 1,1 2,0 bar	1,0 - 1,6 2,0 - 2,5 bar	1,1 - 1,3 1,5 - 2,5 bar 0,8 - 1,2 bar	-	2850 2,0 bar 100 bar
Filler/primer materials	-	1,0 - 1,6 2,0 - 2,5 bar	1,5 - 1,7 1,5 - 2,5 bar 0,8 - 1,2 bar	SM 1,5 - 3,0 bar 0,3 - 0,8 bar	3350 2,0 - 3,0 bar 100 bar
Small repairs	0,8 - 1,1 1,5 - 2,0 bar	0,8 - 1,6 2,0 - 2,5 bar	-	-	-
Release agents	-	-	0,3 - 0,8 1,5 - 2,0 bar	-	-

SATA sets standards

... for spray guns, cup systems, breathing protection systems and compressed air filters.

Our close cooperation with painters in craft and industry as well as with the Research and Development divisions of the leading paint manufacturers enables us to create top quality products of ultimate value.

"SATA Quality" is a trusted term among painters. They know that SATA products are reliable, sturdy and ergonomic like a duck takes to water.

Together with our competent distribution partners both on the domestic market and abroad we ensure **highly performing after sales service.**

In Germany and numerous other countries all over the world, SATA is a **leading paint spray gun manufacturer.** Based on this success, we feel a strong obligation to maintain the high SATA quality standards required by our customers worldwide.



Your SATA dealer



SATA GmbH & Co. KG
Domertalstr. 20
70806 Kornwestheim
Germany
Tel. +49 7154 811-200
Fax +49 7154 811-194
www.sata.com